



THE INDUSTRIAL ARTS OF THE XIX CENTURY

THE GREAT EXHIBITION

1851.

BY

M. DIGBY. WYATT.

ARCHITECT.



J. BROWN, DEL. AT LOND.

LONDON PUBLISHED MARCH 10th 1851 BY DAY & SON, LITHOGRAPHERS TO THE QUEEN 17, CATE STREET, LINCOLN INN FIELDS.

THE INDUSTRIAL ARTS
OF
THE NINETEENTH CENTURY.

A SERIES OF ILLUSTRATIONS

OF THE

CHOICEST SPECIMENS PRODUCED BY EVERY NATION

AT THE

GREAT EXHIBITION OF WORKS OF INDUSTRY, 1851.

DEDICATED, BY PERMISSION, TO HIS ROYAL HIGHNESS THE PRINCE ALBERT.

By M. DIGBY WYATT, ARCHITECT.

LONDON:

PUBLISHED BY DAY AND SON, LITHOGRAPHERS TO THE QUEEN.

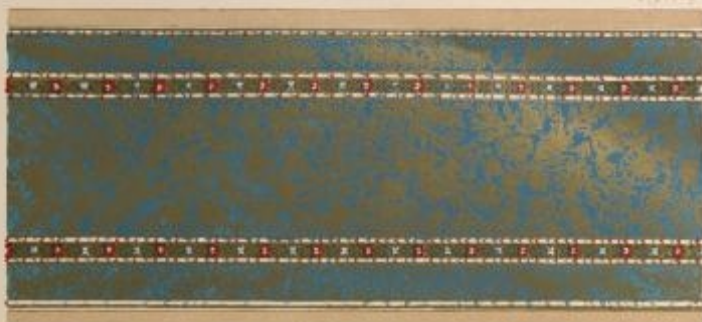
WINDS



H. S. WIGHT SCULPTOR

J. A. HOPKINSON, BOSTON, LITH.

THE AMAZON
BY FRITZ KOENIG



S. N. 221. 222.

M. 100. 101. 102.

S. N. 221. 222.

SPECIMENS OF PAINTED LACQUER WORK FROM LAHORE.

PRINTED AND SOLD BY THE GOVERNMENT OF INDIA, CALCUTTA.



W. & A. GILBERT, 11, N. BROADWAY, N. Y.

W. & A. GILBERT, 11, N. BROADWAY, N. Y.

W. & A. GILBERT, 11, N. BROADWAY, N. Y.

DAGGER AND SHEATH IN THE DAMASCENE WORK BY ZULDAGO OF MADRID.

LONDON, PRINTED AND PUBLISHED, SEPTEMBER 30, 1884, BY W. & A. GILBERT, 11, N. BROADWAY, N. Y.





Handwritten signature or mark in the bottom right corner of the image area.

THE CHILD CHRIST. ('CHRIST ANGEL')
A MARBLE RELIEF IN WHITE MARBLE BY KISTOCKEL OF DRESDEN

© 1900 BY THE PHOTO-DUPLICATION SERVICE, INC.



G. H. B. & CO.

MADE IN FRANCE

A GROUP OF EARTHENWARE VASES,
BY MANSARD ET ROBINET, FRANCE.

G. H. B. & CO.

PRINTED AND PUBLISHED BY W. & A. G. B. & CO., 15, N. B. ST., N. Y.



— 1871, N.Y.

— 1871, N.Y.

— 1871, N.Y.

WHITE WOOD CABINET.

BY MICHEL L. HITT, OF BERNE.



PISTOLS, ENGRAVED AND INLAID WITH DAMASCENE NIKK,
BY ZULEKHA IN BAGDAD.



THE MASSACRE OF THE INNOCENTS:
CARVED IN WOOD BY SCULPTORS OF LOUVAIN.

SCULPTOR: J. VAN DER STREECK. PHOTOGRAPHER: J. VAN DER STREECK.



A. W. HARRINGTON, 1877

W. BIRD, 1877, 1881

T. H. GARDNER, 1874

SPECIMENS OF TURKISH EMBROIDERY



1850. 100.

W. & A. G. 100.

GROUP OF VASES &c.
BY "WINTON" OF STOKE-UPON-TRENT.

PRINTED BY W. & A. G. 100. AS STATIONERS AND BOOKSELLERS TO HER MAJESTY'S MOST EXCELLENT MAJESTY.



175-2140718 (2)

W. 1000. 4000. 1000

175-2140718 (2)

SPECIMEN OF INDIAN EMBROIDERY.

175-2140718 (2) W. 1000. 4000. 1000



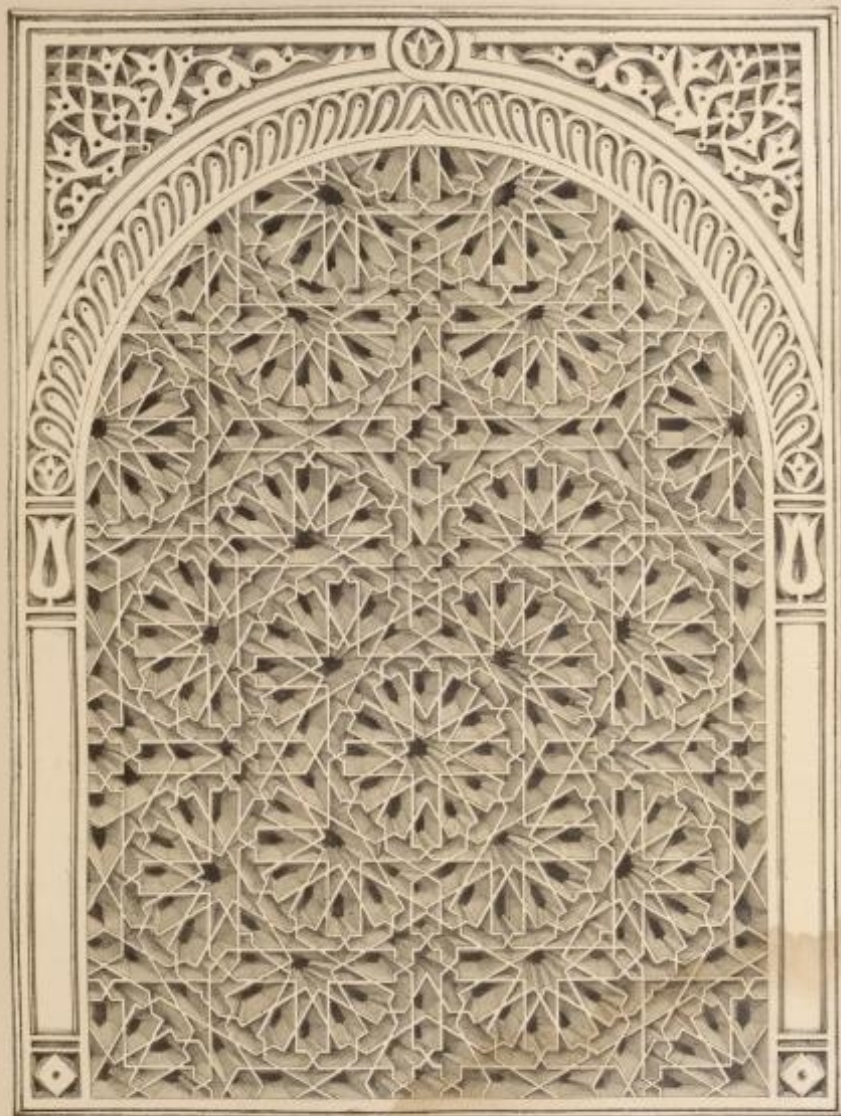
A GROUP IN BRONZE, BY VITTOZ, OF PARIS.

SCULPTURE BY VITTOZ, PARIS. THE CHALICE BY VITTOZ, PARIS. THE RIBBON BY VITTOZ, PARIS.



VASE, IN GLASS, FROM THE ROYAL MANUFACTORY AT SEVRES.

DESIGNED BY MESSRS. DEBAY & CO., AND EXECUTED BY MESSRS. DEBAY & CO., SEVRES.



WOODEN MOUNTING.

WINDOW ORNAMENT FROM TUNIS.

DESIGN PRINTED AND PUBLISHED BY THE BERNARDINI LITHOGRAPHIC PRESS, LONDON.

P. BERNARDINI, LONDON.



X 14127 DEL.

W. COURTNEY BAKER

Y. BISHOP DEL.

INDIAN ELEPHANT TRAPPING.

LONDON: PRINTED AND SOLD BY W. CLAY AND COMPANY, BUNGAY, SUFFOLK.



G. SIMON, DEL. ET LITH.

W. BIRD, SCULPTOR.

THE HUNTER—A STATUE IN MARBLE.
BY JOHN GIBSON, ESQ. RA.



A GROUP OF OBJECTS IN GLASS, CUT AND ENGRAVED

DESIGNED BY AN ENGRAVED GLASS CUTTER AND CUT BY GREEN OF LONDON... A DESIGN BY CHARLES AND AN ENGRAVED GLASS CUTTER BY BARNES OF BIRMINGHAM... AND AN ENGRAVED GLASS CUTTER BY APPEL & MELLARTY OF LONDON.

LONDON: PRINTED AND PUBLISHED BY J. W. BARNES, 11, SOUTH BARRICK, LONDON.



A FOUNTAIN AND GATE

FOUNTAIN AND ORNAMENTAL GATE,
 ORDER 1861,
 BY THE CALVERTON COMPANY.

F. PROCTOR LITH.



SPECIMENS OF RUSSIAN EMBROIDERY

DESIGNED BY THE AUTHOR OF "THE ART OF EMBROIDERY" AND "THE ART OF SEWING" AND ILLUSTRATED BY THE AUTHOR.



WINDSOR, WOODS, 1854

MODEL BY W. H. W. H. 1854

"CASSIETTE" CARVED IN MARBLE. SCULPTURE BY MATTHEW OF PARIS.
PAINTING BY J. H. W. H. 1854. IN THE COLLECTION OF THE WINDSOR WOODS.



W. BRADFORD BURNETT, BRADFORD, VERMONT & LLOYD, OF SPIRITFIELDS FOR HOBBS, JAMES & CO. OF LONDON
AND BY HANCOCK & SON, OF SPIRITFIELDS.

Copyright 1900 by W. Bradford Burnett, Bradford, Vermont.



W. & A. G. & CO. LONDON

P. & S. G. & CO. LONDON

THE CRYSTAL FOUNTAIN,
FAC. COLLEGE OF LONDON AND BIRMINGHAM.



J. H. B. 178

W. P. 178

W. P. 178

HISTORY, A STATUE IN MARBLE, BY BERTHOLD THORVALDSEN

LONDON, BY BIRD, WALKER, & CO., 149, ST. MARK LANE, (OPPOSITE TO THE BANK)



DESIGNED BY MRS. J. W. BROWN

MADE IN U.S.A.

PRINTED IN U.S.A. BY PERCY W. WOOD & COMPANY

THEY ARE THE ONLY MANUFACTURERS OF THIS KIND OF GOODS



W. GIBBY, SCULPTOR

J. WILKINSON, LITH.

VASE IN SILVER, BY HUNT & ROSKELL OF LONDON

A SILVER VASE, AND PUBLISHED LAST YEAR BY GAY & SON, LITHOGRAPHERS TO THE QUEEN.





Stanetti
 W. GALT WHITCOMB

L. A. WINTER DEL. ET. LITH.

CUPID AND PANTHER, BY STANETTI OF DRESDEN.

DESIGNED BY THE ARTIST AND ENGRAVED BY GALT & WHITCOMB FOR THE QUEEN.



F. SHILLFIELD DEL.

W. THOMAS & CO. PRINT.

© BEESTING LTD.

BLACK LACE FLORETT (NOTTINGHAM MANUFACTURE) BY CREASEL & HOPKINS

LONDON PRINTED AND PUBLISHED BY DAY & SON, LITHOGRAPHERS TO THE QUEEN.



VASE IN CHINA FROM THE BUNKE MANUSCRIPT OF SEATED
 CHILDREN



A. GILBY, MASTY, DIPER.

F. BILSON, CIVIL.

SPECIMEN OF INDIAN LAC-WORK



RICHARD IER DE LION. AN EQUESTRIAN STATUE BY THE MARON MARCONETTI.

DESIGNED BY THE MARON MARCONETTI. ENGRAVED BY J. H. B. AND PUBLISHED BY G. S. B. IN THE YEAR 1861.



J. A. PETER, ENG.

H. SCHUBERT, SCULPT.

T. BOSTON, LITH.

CENTRE PIECE IN SILVER, BY WAGNER OF BERLIN

LONDON PRINTED AND PUBLISHED BY W. & A. G. CHAMBERLAIN, LITHOGRAPHERS TO THE QUEEN.



© H. MULLERSTEIN, 1911.

BY GUSTAV WILHELM

© WEDGWOOD, LTD.

EMBROIDERED BODICE FRONT
 (SCOTCHMAN MANUFACTURE)
 FROM THE HIGHNESS WEDGWOOD & ALI MOONAD

DESIGN PRINTED AND PUBLISHED BY THE WEDGWOOD MANUFACTURE LTD. LITTON, LEICESTERSHIRE, ENGLAND.



A. GARDNER DEL.

A. DEW HARTY SCULPT.

J. A. SMITH LITH.

THE "FIREY STEP" A STATUE IN MARBLE BY PIETRO MAGNI OF MILAN.

WHOLE PRINTED AND PUBLISHED BY GAY & SON, LONDON, HERE IN THE QUEEN.



W. H. HUGHES & CO.

LONDON, ENGLAND

P. MASON & CO.

GROUP OF GLASS BY COUNT HARRACH OF BOHEMIA

LONDON PRINTED AND PUBLISHED BY W. H. HUGHES & CO. LITHOGRAPHED BY THE LITHO.



W. B. DEARBORN DEL.

G. B. WOOD CUT.

T. B. DEARBORN LITH.

FOUNTAIN IN IRON, BY ANDRÉ OF PARIS.

LONDON, PRINTED AND SOLD BY G. B. WOOD, 15, N. B. STREET, IN THE Strand.



W. H. WOOD

W. H. WOOD

W. H. WOOD

GROUP OF INDIAN VASES AND INDIAN JEWELRY

INDIAN ARTS AND MANUFACTURES DEPARTMENT, BUREAU OF ETHNOLOGICAL SURVEYS



© BRIDGEMAN 1907

A. BRIDGEMAN 1907

P. BRIDGEMAN 1907

A GROUP OF CHURCH PLATE BY BRIDGEMAN OF COVENTRY

LONDON: PRINTED AND SOLD BY BRIDGEMAN OF COVENTRY, LONDON, AND BY THE DIRECTOR, BRITISH MUSEUM, LONDON.



W. & A. G. & CO. LONDON

© HARRISON

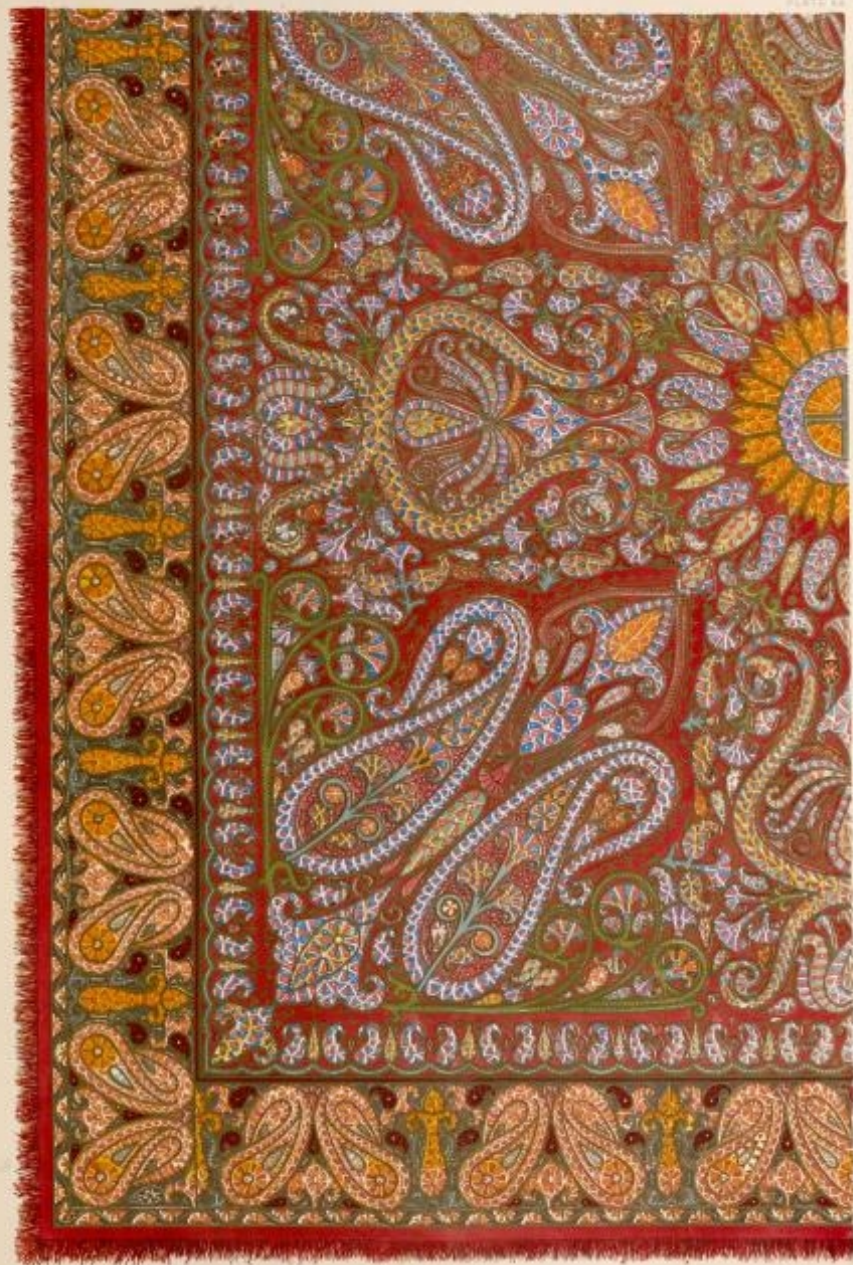
PAPER HANGING BY HINCHLITE & CO. OF LONDON

LONDON, 10, 11 & 12, THE MARLBOROUGH BUILDINGS, 17, 18 & 19, COVENT GARDEN, W.C.2



METAL BEDDING, & C. OF THE HOUSE OF COMMONS

DESIGNED AND MADE BY THE HOUSE OF COMMONS, LONDON, & THE HOUSE OF COMMONS, LONDON.



A. C. WOOD, DEL.

W. B. WOOD, SCULPT. 1854

G. B. WOOD, LITH.

SHAWL FROM DELHI, THE PATTERNS WORKED ON A DAMASCUS GROUND.

LONDON PRINTED AND PUBLISHED BY WOOD, BIRD & CO., LITHOGRAPHERS TO THE QUEEN.

and Charles (London)

1854





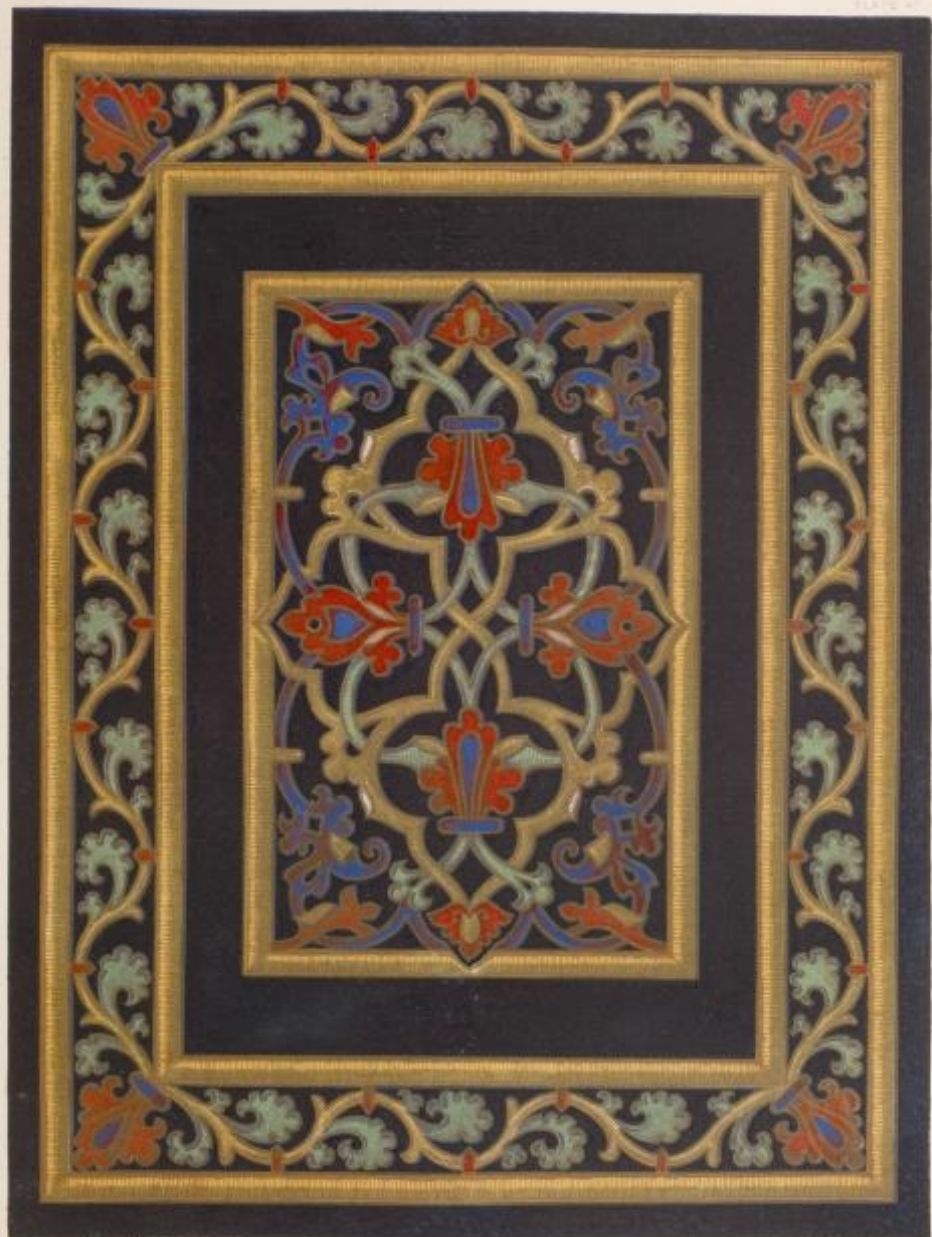
W. & A. GILBERT

A. B. GILBERT

W. & A. GILBERT

GROUP OF PLATE BY GARRARD OF LONDON

LONDON: PRINTED AND PUBLISHED BY W. & A. GILBERT, 15, N. B. ST. MARKS, LONDON, E.C. 4.



BOOK COVER BY FRENCH OF BOLTON-LE-MOORS, LANCASHIRE

DESIGNED BY FRENCH AND WOODWARD, MARCH 1890. ACC. 100.4.100. LITHOGRAPHED BY THE BIRKENHEAD LITHOGRAPH CO., BIRKENHEAD.



W. JUDY WATT, DIRECTOR

INDIAN SCARF END EMBROIDERED AT Dacca ON WHITE MUSLIN

LONDON: PRINTED AND PUBLISHED BY GEORGE ALLEN AND UNWIN LTD., 10, BEDFORD SQUARE, W.C.2

F. SECORD LITH.



J. A. SMITH DEL. ET SCUL.

W. DICKS SCULPTOR

THE PLEASURES OF PUBLIC GARDENS. A SERIES OF BAS RELIEFS BY F. DRAKE OF HELEN

DESIGNED BY THE ARTS AND CRAFTS SOCIETY OF THE UNIVERSITY OF THE SOUTH



DESIGNED BY MESSRS. GIBSON AND COMPANY, ARCHITECTS, 15, SOUTH SQUARE, LINCOLN'S INN, LONDON.

SCULPTURED BY MESSRS. GIBSON AND COMPANY, ARCHITECTS, 15, SOUTH SQUARE, LINCOLN'S INN, LONDON.

ENDELFUR AND APARELUI - DESIGNED BY TRENTACOCK OF PARIS

SCULPTURED BY MESSRS. GIBSON AND COMPANY, ARCHITECTS, 15, SOUTH SQUARE, LINCOLN'S INN, LONDON.



J. B. ROYER DEL.

ROYER DEL. 1828

J. B. ROYER DEL.

A GROUP OF ENAMELS FROM THE ROYAL MANUFACTORY AT SEVRES.

LONDON: PRINTED AND PUBLISHED BY G. & S. B. S. 178, ST. MARKS LANE, IN THE CITY.





ANDROMEDA, A STATUE IN BRONZE BY JOHN BELL OF LONDON
(CAST BY THE EDWARDS & DUNN COMPANY)

DESIGN PRINTED AND PUBLISHED BY JOHN BELL, 10, SOUTH BARRICK, LONDON, W. 1864.



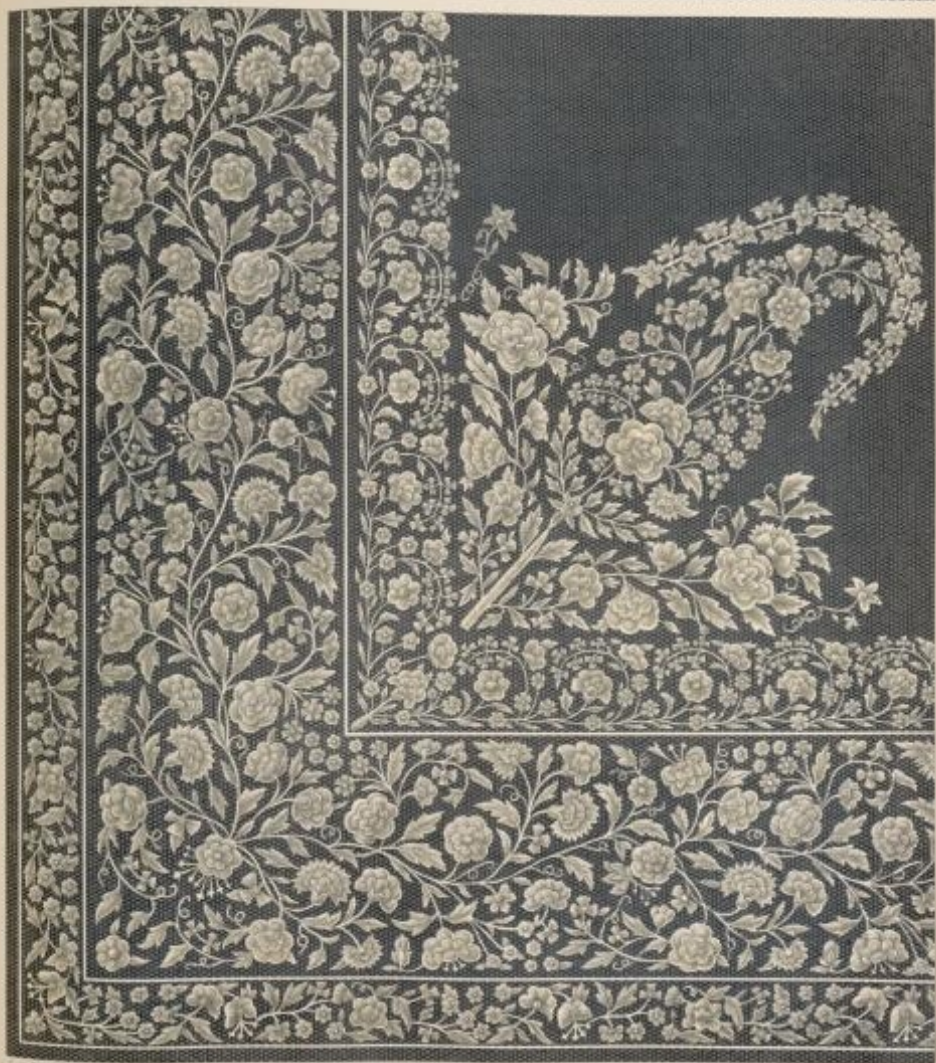
A CHINESE LOOKING GLASS IN CARVED WOOD FRAME

DESIGNED BY J. H. COLEMAN, ARCHT. & SCULPTOR, 10, N. 4TH ST. PHILADELPHIA, PA.



STOVE - WHITE PORCELAIN BY HOFFMAN OF BERLIN

U.S. & FOREIGN PATENT OFFICE, WASHINGTON, D.C.



INDIAN EMBROIDERY IN WHITE SILK ON BLACK NET.

DESIGN PRINTED AND PUBLISHED APRIL 1877, BY G. & S. CO. LITHOGRAPHERS TO THE QUEEN.



PLATE 10.

HERACLES WITH THE LION.

PLATE 10.

THE HERACLES WITH THE LION, WITH THE FEATHER, STATUE BY JERICHAU OF BERLIN.

SCULPTURE BY JERICHAU OF BERLIN. THE HERACLES WITH THE LION, WITH THE FEATHER, STATUE BY JERICHAU OF BERLIN.



W. B. MINTON & CO.

W. B. MINTON & CO.

W. B. MINTON & CO.

THE RENAISSANCE VASE AND DISH IN PARIS, BY MINTON OF STOKES-UPON-TRENT.

DESIGNED BY W. B. MINTON & CO. MANUFACTURED BY MINTON OF STOKES-UPON-TRENT.



DESIGNED BY J. COLEMAN
MANUFACTURED BY J. COLEMAN
© 1855
Piano-fortes by COLLARD & COLLARD OF LONDON

LONDON: PRINTED AND PUBLISHED BY H. & J. COLEMAN, LITHOGRAPHERS TO THE QUEEN.





THE FIRST CRADLE BY DESHAY OF PARIS.

BY THE SCULPTOR, DESHAY OF PARIS, AND BY THE ARTIST, HENRI LAFAYETTE, PARIS.



W. BROWN & CO. LONDON

© W. BROWN & CO.

A GROUP OF FLOWERS - MADE IN THE SHAPE OF A GOAT - WITH THE HEAD OF A GOAT AT THE TOP - IN THE CENTER.

THIS ARRANGEMENT WAS MADE BY THE ARTIST OF THE NAME OF W. BROWN & CO. LONDON - IN THE YEAR 1880.



W. H. & W. T. 1857

DECORATION OF AN APARTMENT BY THOMAS OF LONDON

LONDON, PRINTED AND PUBLISHED BY W. H. & W. T. 1857. NO. 100 & 101, FLEET STREET, NEAR CHURCH LANE.



F. SKILLING & CO.

W. DICKY-WHATT, LONDON

P. PROFFER & CO.

PORTIERS OF PRINTED HORNBY & CO. OF LONDON

PRINTED & PUBLISHED BY J. B. BARNES, LONDON, AND BY THE AUTHOR, 10, BROADWAY, N.Y.



1870-71 MUSEE LAFAYETTE

1870-71 MUSEE LAFAYETTE

PILASTER IN CARTON PIERRE BY CRUCHET OF PARIS

DESIGNED BY AND HIS SKILLFUL USE OF ALL BY HIS FINE LITHOGRAPHY AND GALLEY



GOLD VASE—ENRICHED WITH JEWELS AND ENAMELS—
BY MATHERSON & BRODIE, OF LONDON.

JEWELS, ENAMELS AND PEARLS 1888-1910 AND BY THE SAME CORPSENGERS IN THE SAME







NICHE AND FIGURE CARVED IN WOOD BY BALLECH, OF PARIS.

THE FIGURE AND FIGURE CARVED BY BALLECH, OF PARIS.



L. 10413. 10.2.

WINDHAM STREET, DUNDEE.

THE DUNDEE CO.

TABLE COVERS BY HERRING'S BIKENIDGE ST. GUYENWLINE

LONDON PRINTED AND MADE BY THE LONDON PRINTING AND LITHOGRAPHING CO. LTD. 15, ABchurch Lane, LONDON, E.C. 4.

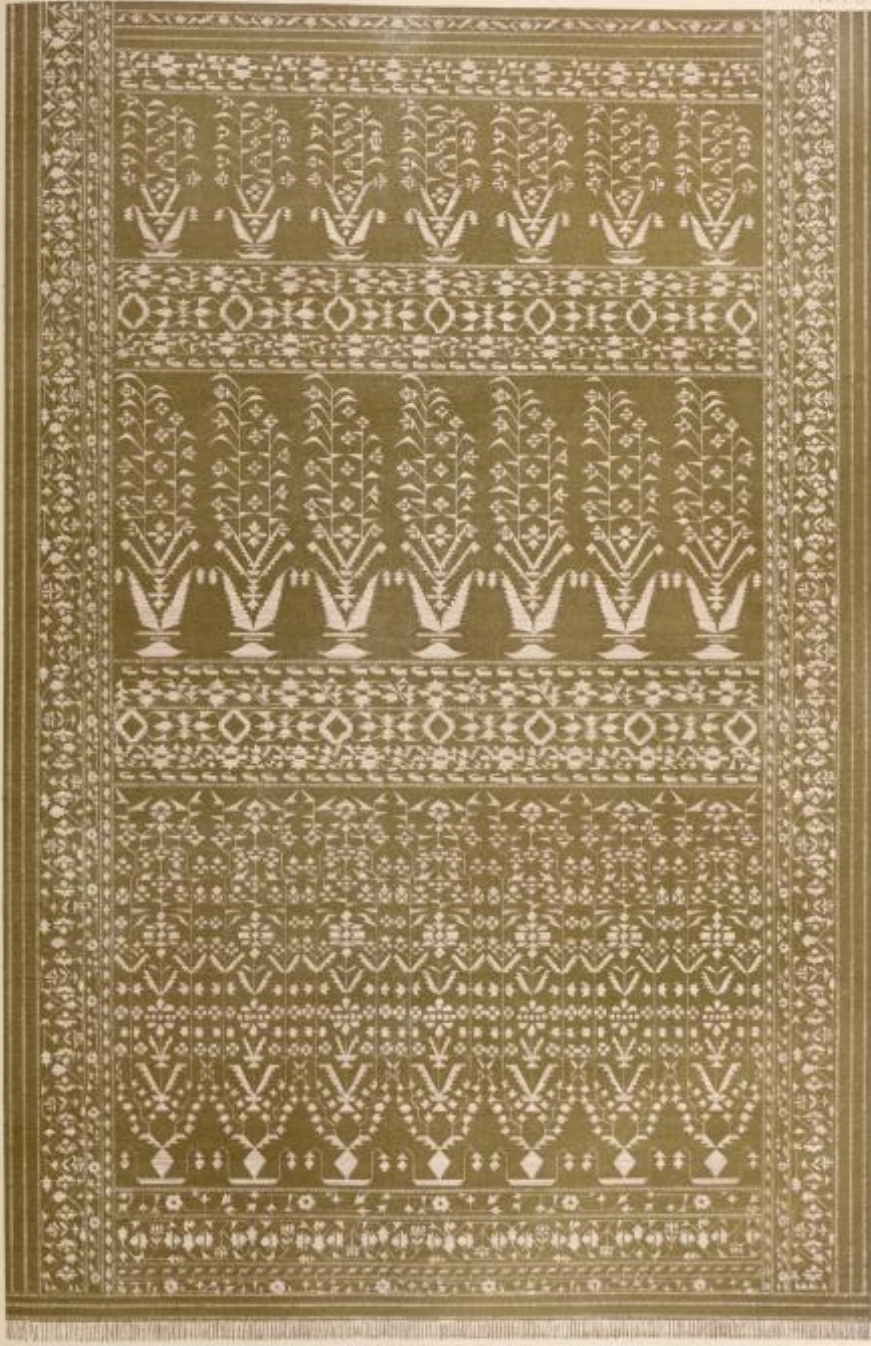


A. COOPER, MANUFACTURER

2, BEDFORD SQUARE, LONDON

PAPER HANGING BY WOOLLCAMS OF LONDON

DESIGNED BY MISS MARY WOOD, ASSISTANT MANAGER OF THE WORKS, MANUFACTURERS TO THE QUEEN



INDIAN, KINWAL WESTERN

UNIVERSITY AND MUSEUM OF THE UNITED STATES DEPARTMENT OF THE INTERIOR



W. P. FRIZZELL, DEL.

W. GIBSON, SCULPTOR, ENGRAVER.

J. W. HINDLE, LITH.

A PORTION OF A SILVER SHIELD

PRESENTED BY HIS MAJESTY THE KING OF SWEDEN TO HIS BORNAL HEARDED THE PRINCE OF WALES IN THE OCCASION OF HIS DEPARTURE

LONDON: PRINTED AND PUBLISHED BY JAMES B. GUNN, LITHOGRAPHER TO THE QUEEN.



VASE IN TERRA COTTA MODELLÉ BY JOHN THOMES OF LONDON
FOR EDWARD LASS BRETTS OF LONDON.

MADE IN ITALY BY THE ARTIST JOHN THOMES, THE ARTIST TO THE QUEEN



T. H. WATKINS DEL.

6 BISHOPSHOOTING GATE

J. B. BISHOP SCULPTOR

BED-ROOM FURNITURE IN MARQUETERIE BY TROLLOPE OF LONDON

LONDON, PRINTED AND PUBLISHED BY SPENCER BROWN & SON, LITHOGRAPHERS TO THE QUEEN



W. & A. G. 1865

GREEK EMBROIDERY

LONDON: PRINTED AND SOLD BY W. & A. G. 1865. LITHOGRAPHED BY THE QUEEN



J. SMYTH DEL.

W. 2000' AAST' 0480'

W. LINDSAY SCULPT.

THE BOY BY THE STREAM A STATUE BY J. H. FOLEY ESQ OF LONDON
 CAST IN BRONZE BY HATTFIELD OF LONDON

PRINTED AND PUBLISHED BY J. H. B. & CO. LONDON



P. DELANGRE, DEL.

W. & A. G. WHITT, SCULPT.

F. COSTARD, LITH.

VASE IN WHITE CHINA BY JOUANNEAUD & DUBOIS, OF PARIS

LONDON, PRINTED AND PUBLISHED, 1854, BY THE BISHOP & SON, LITHOGRAPHERS TO THE QUEEN.



BY
M. DIGBY WYATT.
ARCHITECT.



LONDON: PRINTED BY RICHARD CLAY AND COMPANY, LTD., BUNGAY, SUFFOLK.

LONDON: PUBLISHED BY RICHARD CLAY AND COMPANY, LTD., BUNGAY, SUFFOLK, AND BY THE QUEEN'S-PLATE BOOKSELLERS, LONDON AND NEW YORK.



S. DODD, WHITECHURCH

— 4021106 — 1000

A TABLE AND OTHER OBJECTS BY ELKINGTON & WASON OF SHEFFIELD

GIVEN TO HER MAJESTY THE QUEEN BY HER EXCELLENCY THE PRINCESS OF WALESE



1. W. HURFORTH, 1874

W. GILBY WHITE, 1874

G. WATKINS, 1874

ALBANIAN COSTUME EMBROIDERY.

LONDON, PRINTED AND PUBLISHED BY WILKINSON AND GIBSON, 11, FLEET STREET, TO THE QUEEN.



PLATE 21

A GROUP. WHITE. 1850.

7 INCHES HIGH.

FLOWER STAND DESIGNED BY MAROCCHETTI FOR MINTON OF STONE, LONDON, TRENT

MADE IN ENGLAND BY MINTON OF STONE, LONDON, TRENT



JEWELLERY DESIGNED BY RUDIN AND EXECUTED BY HARGREAVES OF WIMBORNE

LONDON THE ONLY PLACE WHERE GOLD IS BEATEN BY THE BELL AND THE ONLY PLACE WHERE THE ONLY





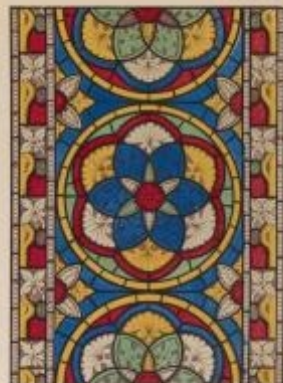


H. MITCHELL DEL.

A. COO. SCOTT. SCULPT.

GROUP OF CHINESE BRONZES.

LONDON, PRINTED AND PUBLISHED, SUCCESSORS TO THE OLD AND NEW BOND ST. LITHOGRAPHERS TO THE QUEEN.



W. & A. G. WALLS

STAINED GLASS BY WALLS OF NEWCASTLE UPON TYNE, AND BY CHARGE OF BIRMINGHAM.

DESIGNED BY WALLS AND GIBBS, 1851-1852, AND BY WALLS AND GIBBS, 1853-1854.



FIGURED SILK MANUFACTURED BY CAMPBELL AND SONS LTD OF SHEFFIELDS
FOR JAMES & CO. LTD OF LONDON

DESIGNED BY MISS MARY BETHUN AND MISS MARY BETHUN



INDIAN EMBROIDERY ON CRIMSON SILK.

DESIGNED BY MISS MARY WATSON, AND EXECUTED BY MISS MARY WATSON, AT HER WORKS, LONDON, IN THE YEAR 1851.

—
20



DESIGNS SELECTED FROM A DESSERT SERVICE PRESENTED BY HER MAJESTY THE QUEEN
TO THE EMPEROR OF AUSTRIA, EXECUTED BY WINTON OF STOKES UPON TRENT

THE PATENT OFFICE, LONDON: PRINTED BY W. CLAY AND COMPANY, LONDON: 1852.



W. CRAIG, DEL.

WOODEN WHITE, PAINT

W. & A. GIBSON, LONDON

CABINET IN OAK WITH VELVET PANES, DESIGNED BY YOUNG AND EXECUTED BY CRAIG OF LONDON.

ALL COLOURS AND FINISHES KEPT THE SAME BY YOUNG & CO. IN CALLING ON THE DESIGN.



WALTERS, 1881

W. & A. WOODS, 1881

W. & A. WOODS, 1881

TABLE COVERS, FROM DESIGNS BY MISS A. EARLY
EXHIBITED BY W. & A. WOODS OF LONDON.



W. H. B. & CO. LTD.
 PORTFOLIO OF EMBROIDERIES BY THE CHURCH & CO. OF FAIRLEY.

THE EMBROIDERIES ARE EXECUTED BY THE CHURCH & CO. OF FAIRLEY.



STATUETTE IN IVORY, AND OBJECTS IN GOLD AND SILVER
BY FROMENT MEURICE OF PARIS.



AN OPEN-WORK PANEL EAST IN BRASS BY BAILEY & CO OF LONDON



1860-1861

W. & A. PARKER

1860-1861

PAPER HANGING EXECUTED BY TOWNSEND & PARKER OF LONDON

Printed and Published by TOWNSEND & PARKER, 15, Abchurch Lane, London, E.C. 4.

and

1861



BOOK BINDING EXECUTED BY J. J. LEIGHTON, OF LONDON, AND DESIGNED BY W. LEIGHTON.



A. BAYLI, DEL.

W. G. & CO. WHITE CHINA

T. BEECHER, LITH.

TERRA COTTA FIGURE OF GALATEA & GROUP OF MAJOLICA GARDEN VASES
BY MINTON & STONE-UPON-TRENT

LONDON, PRINTED & PUBLISHED SEPTEMBER 1862 BY DEY & AGES, LITHOGRAPHERS TO THE QUEEN



SILVERSMITHS WORK BY DOUOH OF BIRMINGHAM.



FIGURE 50.

A STOVE WITH STOVE

© 1852, 1853, 1854

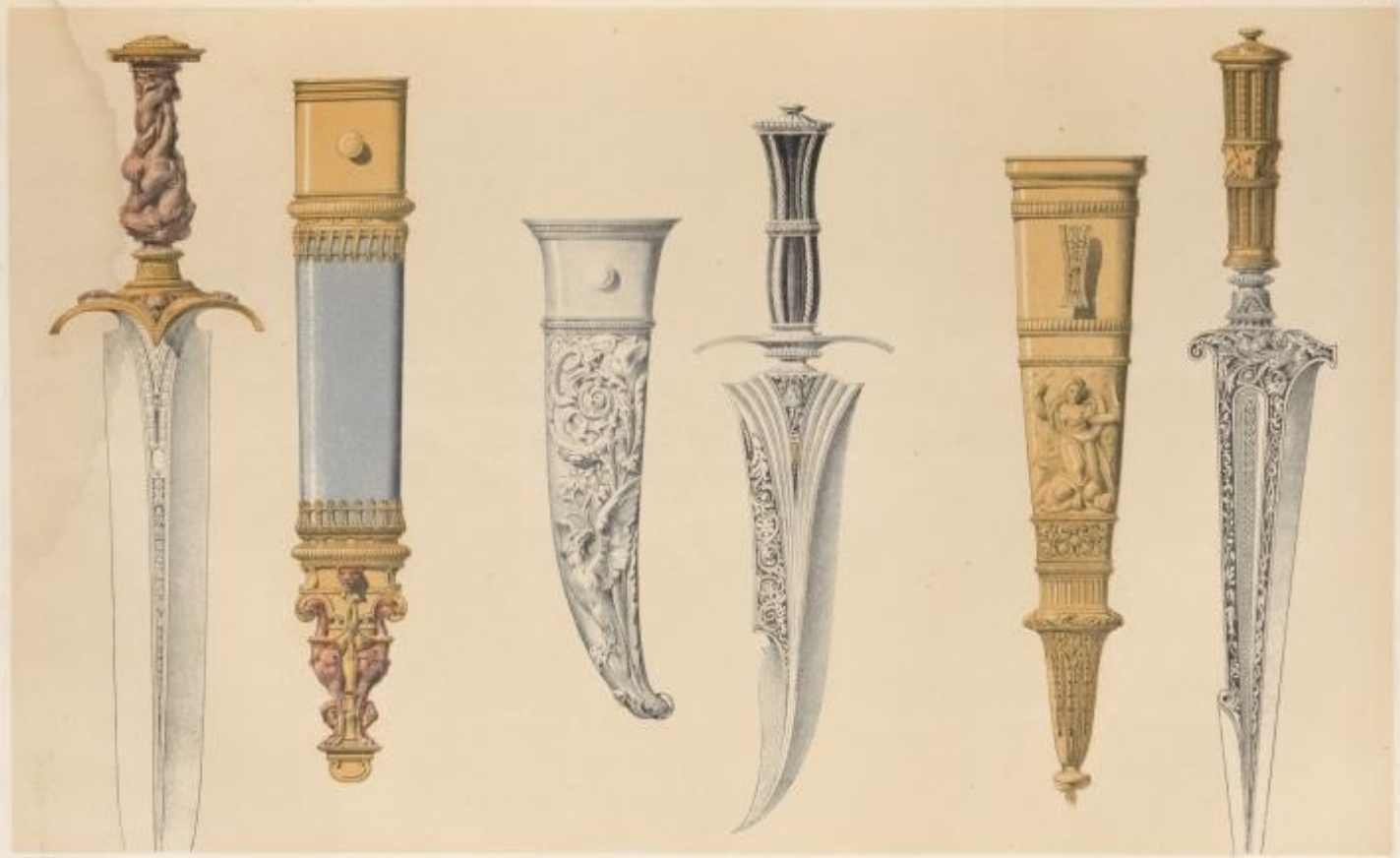
STOVE DESIGNED BY A. STEVENS FOR HOBBS & HOODE OF SHEFFIELD.

PUBLISHED BY J. & J. CO. LONDON AND SHEFFIELD.



PAPER DÉCOUPE DE MADIE FRÈRES ET PARIS

MAISON FONDÉE PAR FLORENTIN DÉCOUPEUR DE LA RUE DE LA HARPE, 110, PARIS



W. H. STUBBS DEL.

W. H. STUBBS DEL.

W. H. STUBBS DEL.

DAGGERS & SHEATHS DESIGNED BY J. STEVENS FOR WESTENHOLZ OF SHEFFIELD

LONDON: PRINTED AND PUBLISHED BY TAYLOR AND FRANCIS, 4, ABchurch-lane, W. 1852.





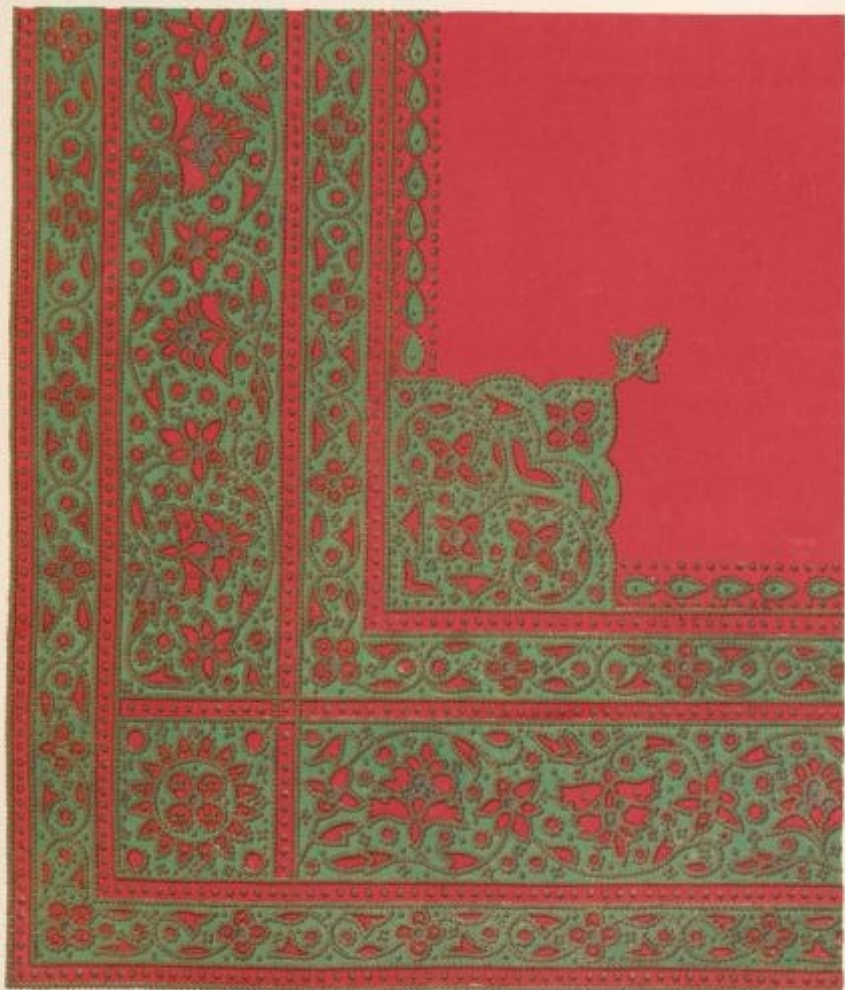
LAVES, DEL.

R. DICKINSON, DEL.

FRESHFIELD, DEL.

FLORENTINE WORK BY WOODRIFE OF BARKWELL, AND ENAMELLED GLAZES BY WAGNER OF PIRELLA

GREEN, PICTURED BY PHILIPPA, 1877. 1882. BY THE B. & S. CO. LONDON PAPERS, TO THE QUEEN.



LONDON: BELL & BOWEN

4, BISHOPSGATE STREET

DECORATION OF AN INDIAN SADDLE COVER

LONDON: BELL & BOWEN, 4, BISHOPSGATE STREET, 1880. BY THE PHOTOGRAPHIC PROCESS.



MADE IN

MADE IN

MADE IN

A SHIELD IN IRON DESIGNED BY VECHTE FOR LE PAGE MOULIER OF PARIS.

REPRODUCED AND PUBLISHED BY THE BRITISH PHOTOGRAPHIC SOCIETY.



STOVE IN THE MEDIEVAL STYLE, DESIGNED BY PUGIN FOR HARDMAN OF BIRMINGHAM

DESIGNED BY PUGIN FOR HARDMAN OF BIRMINGHAM. PRINTED AND PUBLISHED BY J. B. B. 1857. BY J. B. B. 1857. BY J. B. B. 1857. BY J. B. B. 1857.



ENAMELLED VASE & DISH EXECUTED BY MORELL FOR WEBB OF LONDON

LONDON, PRINTED & PUBLISHED, 507, (ST. MARKS), BY DAVID BRAY GUTHRIE, PHOTOGRAPHER TO THE QUEEN



DESIGNED BY PUGIN FOR CRAIG OF LONDON
 CARPETS IN THE MEDIEVAL STYLE, DESIGNED BY PUGIN FOR CRAIG OF LONDON
 WHICH, PRINTED AND PUBLISHED 1827 (BY 1845 BY DAY & SON, 17, CECIL STREET, TO THE CARE OF

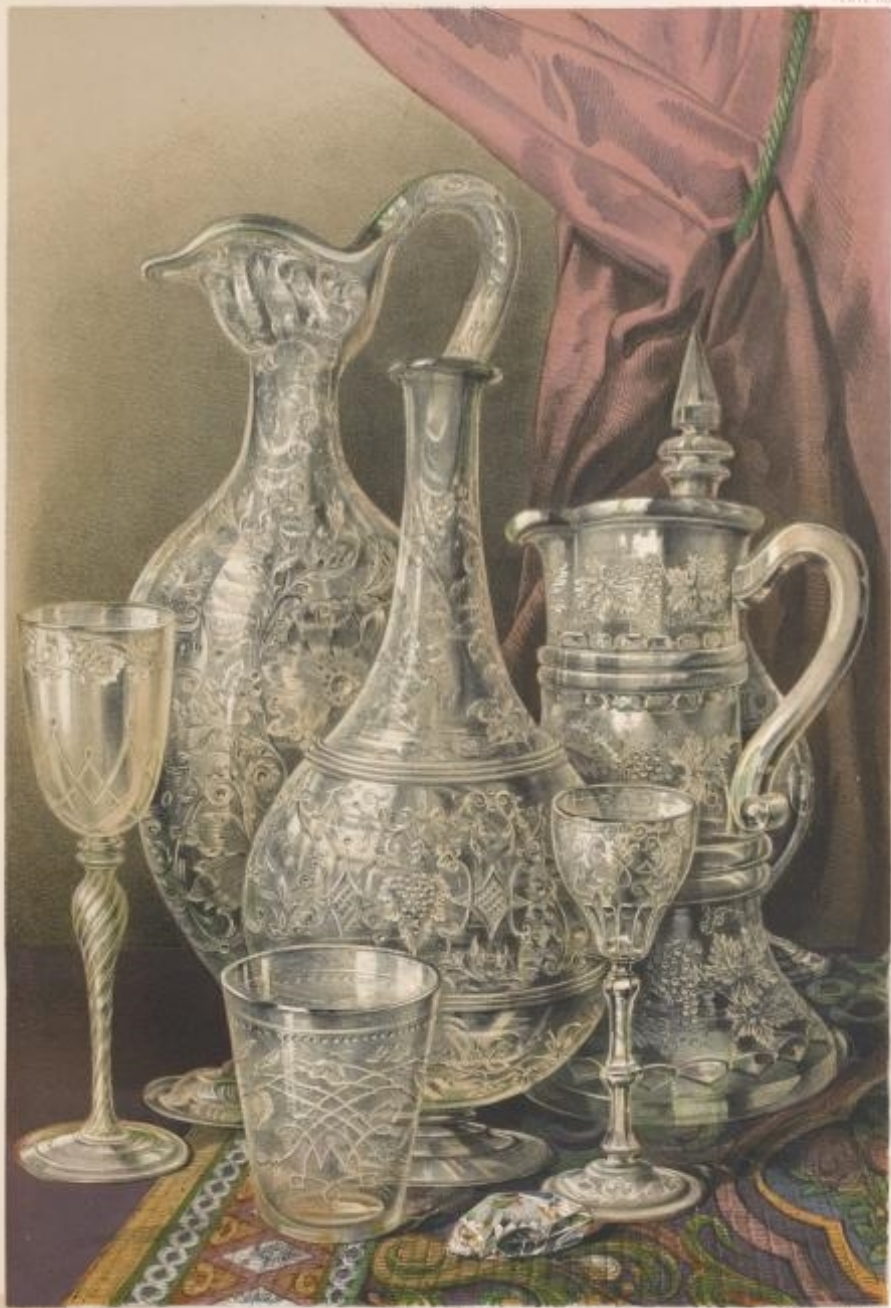


WILHELM WITTE, SCULPTOR.

L. BASTARDI, LITH.

BOOKCOVER IN CARVED IVORY PRESENTED TO HER MAJESTY THE QUEEN
BY THE EMPEROR OF AUSTRIA

IMAGE PRINTED AND PUBLISHED 1897 BY H. B. S. BROWN, LITHOGRAPHER TO THE QUEEN



GROUP OF OBJECTS IN GLASS BY APSLEY PELLATT, R. NAVLOR & J. G. GREEN OF LONDON

DESIGNER, DONATED FOR THE NATIONAL MUSEUM IN 1887 BY THE R. NAVLOR & J. G. GREEN, LONDON, OFFICERS TO THE QUEEN



RUDOLPH, WAGEL, STRAS

REVUE 1874

JEWELRY BY RUDOLPHI OF PARIS

LONDON: PRINTED AND PUBLISHED, WEST-OF-IND BY RICH & SON, LITHOGRAPHERS, 15, THE SQUARE



SPECIMENS OF LACQUER WORK FROM CASHMERE.

THESE SPECIMENS WERE PREPARED BY THE LACQUER WORKERS OF THE ROYAL

Lab. Royal Mus. (Lacquer)



M. DEBAILLE & CO.

M. DEBAILLE & CO.

M. DEBAILLE & CO.

CHOCOLATE CUP IN SILVER BY LEGRON OF PARIS.



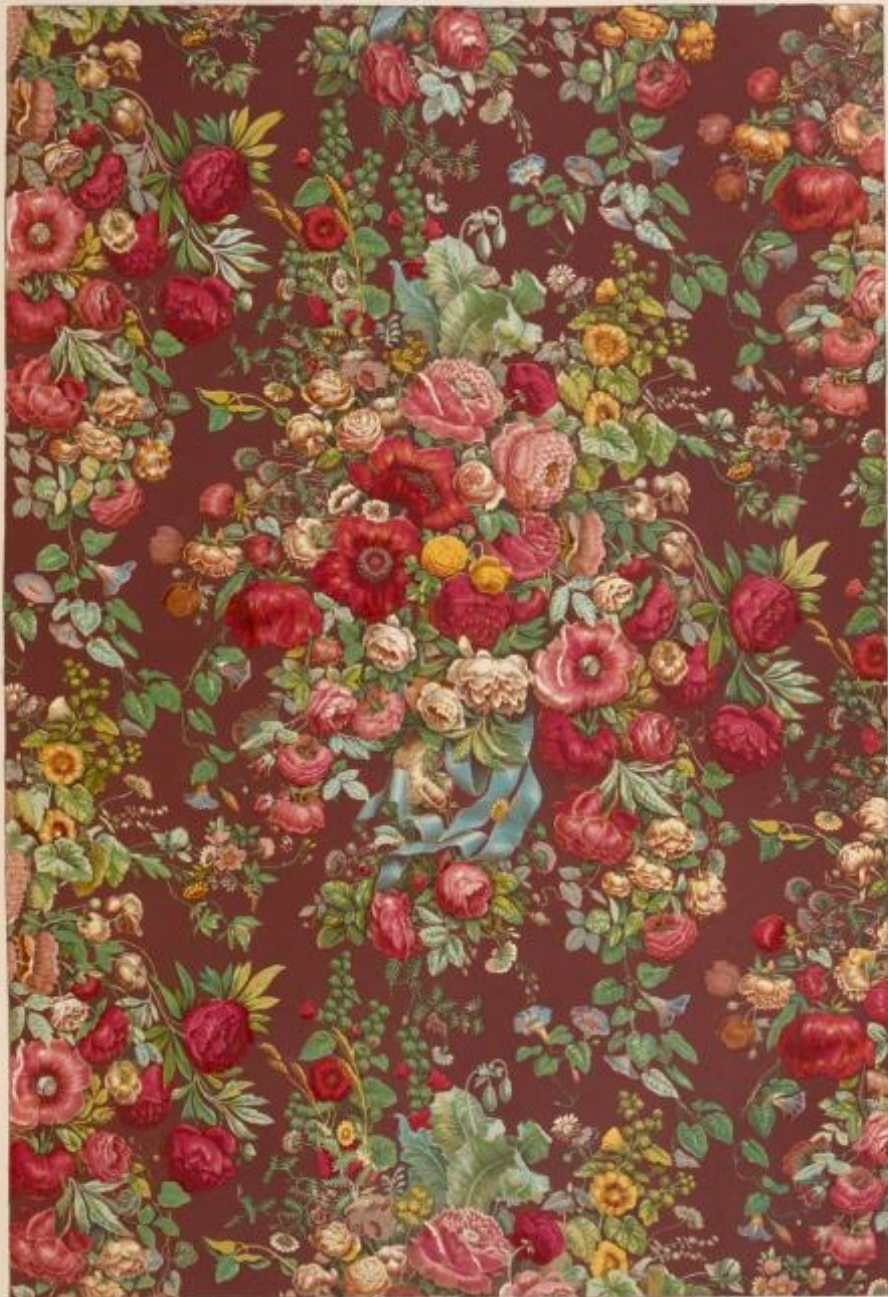
SPECIMENS OF STAINED GLASS BY LUSSON & HY GRENTE OF PARIS.

THEY HAVE THE HONOUR OF BEING THE FIRST TO HAVE INTRODUCED THIS ART TO THE EAST.



PENOBST LAMP IN SEVRES PORCELAIN

DESIGNED BY M. DE LAUNAY AND EXECUTED BY M. DE LAUNAY, MANUFACTURER OF SEVRES



A. JARVIS & CO.

G. J. B. & CO. PRINTED BY

G. J. B. & CO.

CHINTS, PATTERN BY JARVIS & SON, OF PARIS.

LONDON: PRINTED AND PUBLISHED BY G. J. B. & CO. LITHOGRAPHED BY THE GAZETTE.



SILVER 800/1000

PORTION OF A SHIELD IN SILVER 800/1000 FOR HUNT & ROSKELL

DESIGNED BY THE ARTIST AND ENGRAVED BY J. A. STUBBS, ENGLAND. MADE IN THE U.S.A.

J. A. STUBBS



CHINESE VASES IN JADE STONE

THESE VASES AND OTHERS WERE GIVEN BY THE EMPEROR OF CHINA TO THE EMPEROR OF GREAT BRITAIN IN 1816.





STOCK PRINTED TABLE COVER BY EVANS & CO OF LONDON

PRINTED AND PUBLISHED BY THE EVANS & CO. LONDON



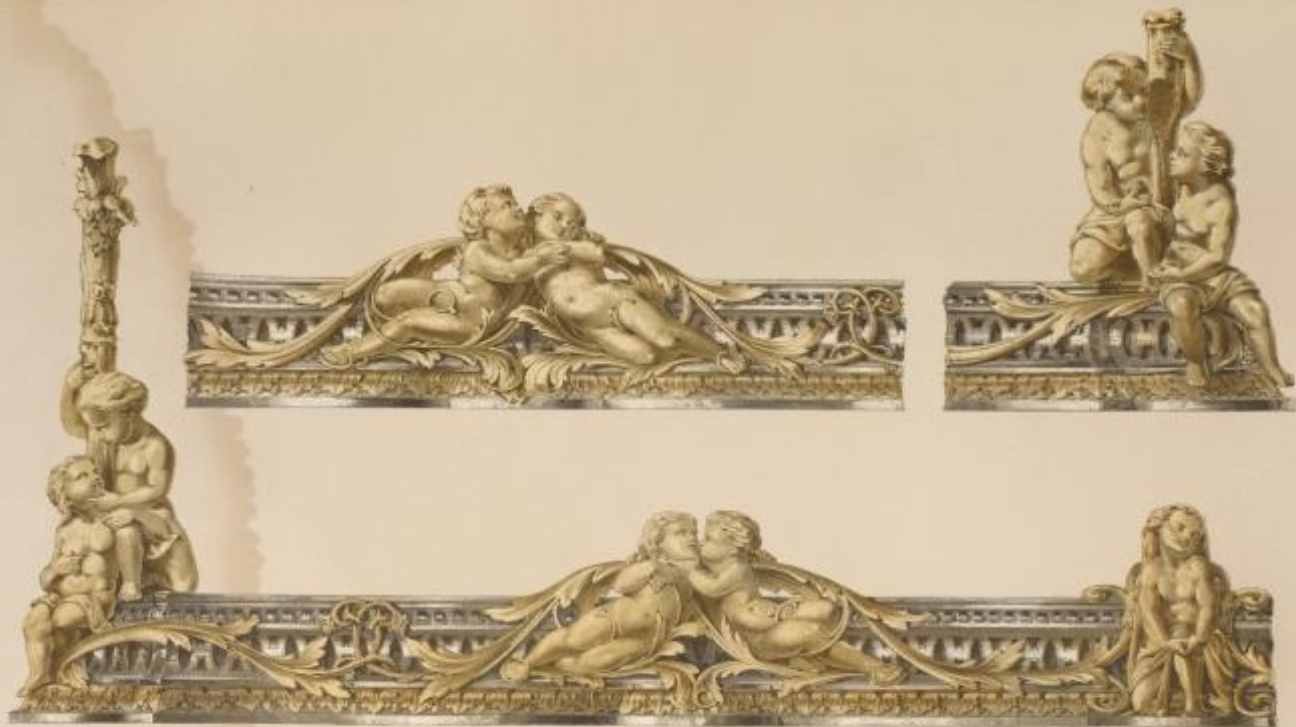
W. BENTLEY DEL.

W. BENTLEY SCULPT.

W. BENTLEY DEL.

THE HOME STOVE AND TENDER BY STUART AND SMITH OF SHEFFIELD.

LONDON PRINTED AND PUBLISHED BY G. & A. S. BENTLEY, 15, SOUTH MOLE STREET, IN THE CITY.



© 1851/52 W. & A. GILCHRIST & CO.

"WOODS BROTHERS, SHEFF."

© 1851/52 W. & A. GILCHRIST & CO.

DETAILS OF THE HORN STOVE AND FENDER BY STUART AND SMITH OF SHEFFIELD.

LONDON, PRINTED AND PUBLISHED BY W. & A. GILCHRIST & CO. 25, MARK LANE, LITHOGRAPHERS TO THE QUEEN.



— 1875— 193

© 1905— 1907— 1908

© 1905— 1907

EMBROIDERED BAGS FROM GREECE



DESIGNS OF TRAVELLING FROM IND TO ANGLO.

These designs are the work of the artist and are not necessarily in the style of the original.



F. H. & C. CO.

LONDON & NEW YORK

F. H. & C. CO.

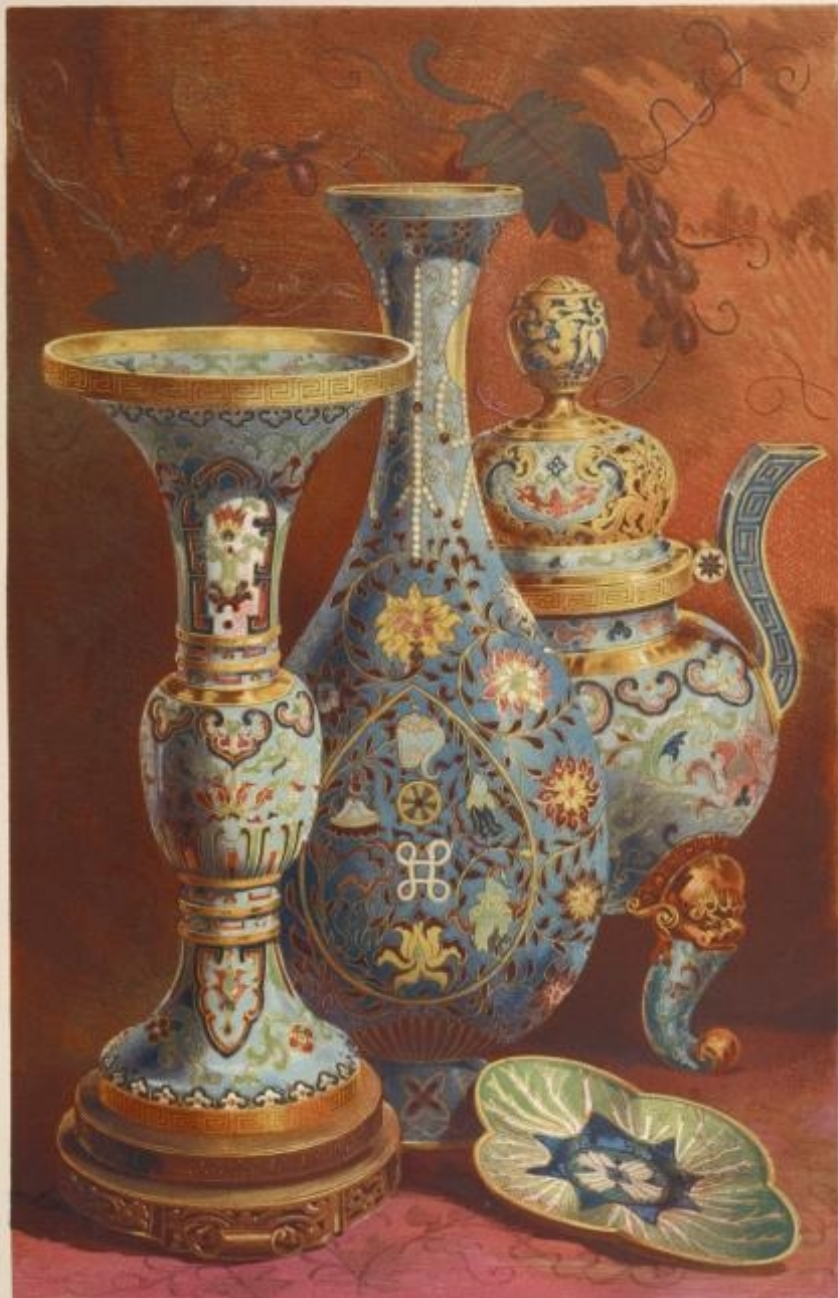
SIDEBOARD WITH GLASS & FURNITURE BY SNELL OF LONDON
DESIGNED BY THE BARON MARCHETTI.

PRINTED AND PUBLISHED BY H. & O. B. LONDON LITHOGRAPHED IN THE QUEEN



PARTI IN EDITE BY FOURDINOIS OF PARIS.

LONDON: PRINTED AND PUBLISHED BY W. & A. G. SMITH, LITHOGRAPHERS, 10, BUCKINGHAM STREET.



W. H. H. & CO.

© GARR. WYATT, 1904

T. BOSTON, U.S.A.

GROUP OF CHINESE ENAMELS

GROUP PREPARED AND COLLECTED JULY 20, 1902, BY SIR JOHN HAY, AMBASSADOR TO THE COURT



PAVEMENT IN ENCAUSTIC TILES BY WINTON & CO. OF STONE-UPON-TRENT



DESIGNED BY A. STEINER FOR HIS MASTER, MESSRS. WILSON & WOODS OF SHEFFIELD

PRINTED BY W. & A. GILBERT, 15, ABchurch Lane, LONDON, E.C. 4.



G. H. & C. CO.

W. H. & C. CO.

G. H. & C. CO.

CRADLE CARVED IN BOXWOOD BY W. D. ROGERS, OF LONDON

LONDON: PRINTED AND PUBLISHED BY G. H. & C. CO., LINDSAY HOUSE, IN THE SQUARE.





ERMINSTER CARPET, BY JACKSON & GRAHAM





FIGURE OF ENAMELED OBJECTS BY MARELLI OF LONDON



J. GREEN, DEL.

W. BURY, WENT, COLOR.

T. BERTHOE, LITH.

SPECIMENS OF LACE BY MISS JANE CLARKE OF LONDON.

LONDON: PRINTED AND PUBLISHED FOR THE AUTHOR BY RAY & SON, LITHOGRAPHERS TO THE QUEEN.



H. W. DEL.

W. G. & W. W. G. W. G. W. G.

P. B. S. P. S. P. S.

GROUP OF OBJECTS IN PORCELAIN.
 BY COPELAND OF LONDON AND STOKE-UPON-TRENT.

— LONDON, PRINTED AND PUBLISHED FOR H. W. G. & W. W. G. BY THE LONDON AND STOKE-UPON-TRENT.

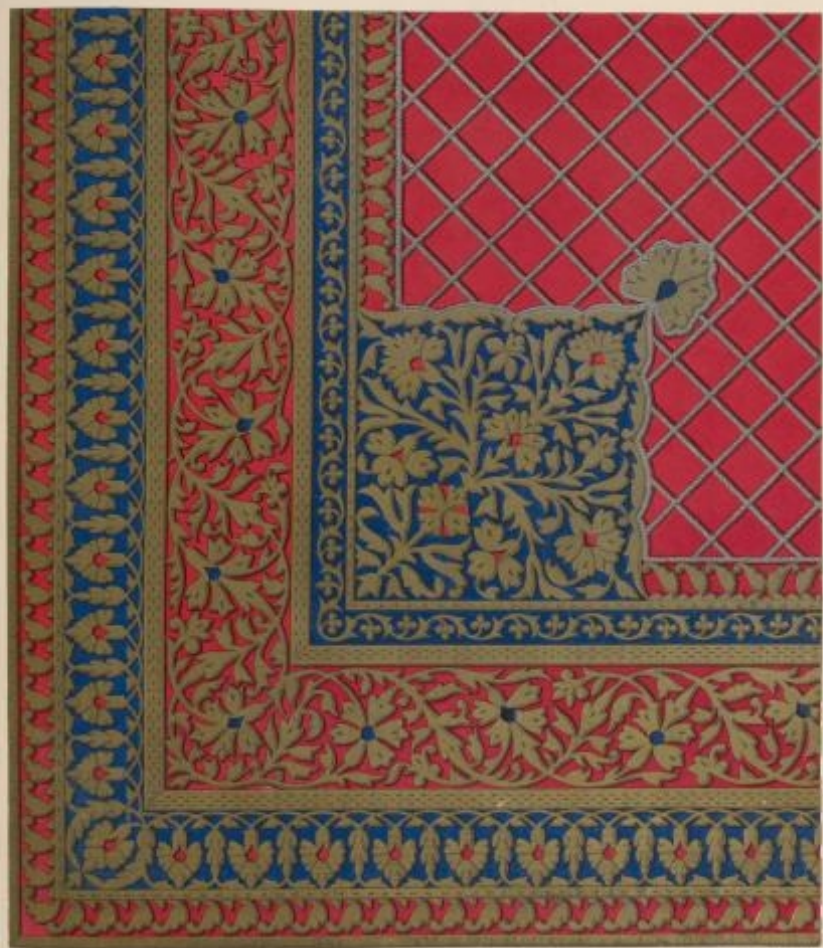


W. DODD & CO. LONDON

© 1854

PENDANT LAMP BY MATIFAT OF PARIS

LONDON: PRINTED AND PUBLISHED BY JAMES BARNES & SONS, LITHOGRAPHERS TO THE QUEEN.



SPECIMEN OF INDIAN BULLION EMBROIDERY

JACOB SMITH AND COMPANY, PRINTERS, 100 N. 3RD ST., PHILADELPHIA, PA.



PAINTED ARABESQUE BY J. C. CRACE WITH DECORATIONS IN COMPOSITION
BY JACKSON & SONS, OF LONDON

LONDON: PRINTED AND PUBLISHED BY T. AGNEW & SONS, 15, WATERLOO PLACE, W. 1887.



W. DODD BY WHART STREET

F. EASTON LITHO

ALTAR AND REREDOS, DESIGNED BY THE LATE A. W. PUGIN,
 CARVED IN STONE BY MYERS & CO. OF LONDON, AND FITTED-UP
 BY HARDMAN, OF BIRMINGHAM.

DESIGN ENGRAVED AND PUBLISHED FOR THE QUEEN BY G. S. BAKER, LITHOGRAPHER TO THE QUEEN.



1875-76, 142

W. & A. G. & C. 1875-76, 142

SIDEBOARD, CARVED IN OAK, BY JACKSON & GRAHAM OF LONDON.

LONDON, 1875-76, 142. THE SIDEBOARD IS NOW IN THE COLLECTION OF THE NATIONAL MUSEUM, WASHINGTON, D. C.



LA 11718. 20. 27. 274

M. SNEYD, WELLS, G. 1871

THE HOURS LEADING FORTH THE HORSES OF THE SUN - A RELIEF BY JOHN GIBSON, R.A. DE KONT.

JOHN GIBSON, R.A. PAINTER AND SCULPTOR. THE HORSES OF THE SUN. COURTESY OF THE METROPOLITAN MUSEUM OF ART.



H. KAYE DEL.

A. DUBY WHITT. SCULPT.

J. BASTARD. LITH.

GAS CHANDELIER IN BRASS BY WINFIELD OF BIRMINGHAM.

LONDON: PRINTED AND PUBLISHED, LAYTONS, BY BEYBROOK, LITHOGRAPHERS TO THE QUEEN.



18-500-101

W. BIRBY, WHITE STREET

18-500-101

SPECIMENS OF INDIAN ENAMELLING SELECTED FROM THE ARMS DISPLAYED IN THE GREAT EXHIBITION

LONDON PRINTED AND PUBLISHED BY HENRY COLLETT, 25, ABchurch LANE, ST. MARTIN'S VICARAGE, LONDON, E.C.



DECORATION DERIVED FROM THE ALHAMBRA
 BEING A PORTION OF THE CABINET OF THE QUEEN OF SPAIN AT GRANADA BY RAFAEL CONTRERAS

DESIGNED AND EXECUTED BY THE ARTIST IN CONSULTATION WITH THE QUEEN



OBJECTS IN SILVER BY FROMONT-MEURICE OF PARIS

LONDON, BRIDGE END, YORK-STERE, CORNER OF ST. MARK'S CHURCH, 1851. AND NEW YORK, 1852. BY THE SAME ARTIST.



F. W. HENNING, DEL.

A. BISHOP, SCULPT.

J. HENNING, LITH.

SHIELDS PRODUCED IN ELECTROTYPE BY ELKINGTON & WASON OF BIRMINGHAM

LEADEN PRINTS AND REPRODUCED BY THE BIRMINGHAM LITHOGRAPHERS OF THE BELL



DESIGNED BY W. B. W.

W. B. W. B. W.

ANIMATED CARPET BY WATSON, BELL & CO. OF LONDON.

LONDON: PRINTED AND PUBLISHED BY WATSON, BELL & CO. 15, MARK LANE, AND BY THE EDITOR, 1, BUCKINGHAM PALACE GARDENS, LONDON.

W. B. W. B. W.



ENRICHMENTS FROM INDIAN ILLUMINATED MANUSCRIPTS. 81.



* ENGLFIELD BELT.

W. G. & W. B. S. S. S. S.

F. BEDFORD LITH.

GROUP OF FURNITURE BY SNELL OF LONDON.

LONDON, PRINTED AND PUBLISHED BY W. & A. G. SNELL, 10, THE QUEEN'S HEAD, LONDON, E.C. 4.



W. HIGGINS, DEL.

R. HIGGINS, LITH.

GROUP OF INDIAN OBJECTS PRINCIPALLY ENAMELED

LONDON, PRINTED AND PUBLISHED BY W. HIGGINS, LITHOPHAGERS TO THE QUEEN



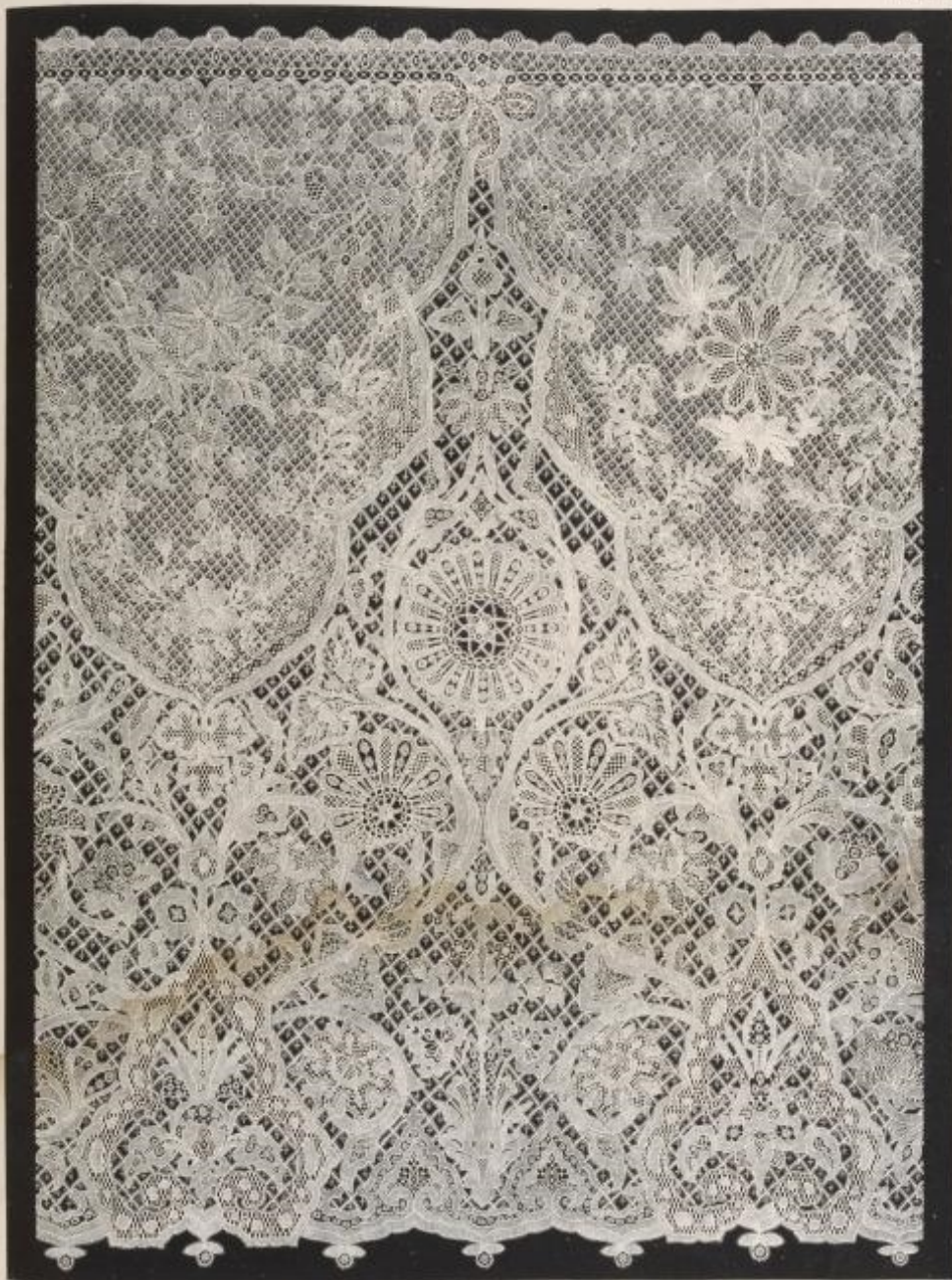
F. GRALL, FIELD & CO.

W. GOSY, WHITE, & CO.

F. BEEDONS, LITH.

SPECIMENS OF SILVERSMITHS' WORK BY MARCEL KRÉRES OF PARIS.

LONDON: PRINTED AND PUBLISHED BY W. GOSY, WHITE, & CO., 11, ABchurch-LANE, LONDON, IN THE STRAITS: BY THE SINGAPORE PRESS.

SPECIMEN OF HONITON LACE BY M^{RS} TREADWIN OF EXETER

LONDON: PRINTED AND PUBLISHED BY GEORGE B. SHERWOOD, 102, BROADWAY, LITHOGRAPHED TO THE ORDER



WHEEL DEL.

W. HUNT & R. ROSKELL

LONDON

ENAMELLED VASE BY HUNT AND ROSKELL OF LONDON.

LONDON, PRINTED AND PUBLISHED BY W. HUNT & R. ROSKELL, 11, FLEET STREET, IN THE OLD BAZAR.



W. GILBERT, DEL.

W. G. & A. GILBERT, SCULPT.

T. REDDING, LITH.

IVORY THRONE AND FOOTSTOOL, PRESENTED TO HER MAJESTY THE QUEEN,
BY HIS HIGHNESS THE RAJAH OF TRAVENCORE.

London, printed and published by W. GILBERT & SONS, 17, SOUTHAMPTON STREET, TO THE QUEEN.



KNEELANDT & CO.

W. DORR WHITT, DIRECTOR

F. BEDFORD, LITH.

BEDSTEAD IN ZEBRA-WOOD BY CARL LEISTLER & SON OF VIENNA

LONDON, PRINTED AND PUBLISHED AND SOLD BY DODD & SON, 17, WHITECHAPEL, TO THE QUEEN